



**Metropac**

# PRODUCT GUIDE

<https://metropac.co.uk>

☎ 020 3005 3209

✉ [info@metropac.co.uk](mailto:info@metropac.co.uk)

📍 [Rayley Lane North Weald CM16 6AR Epping ESSEX](#)



# Metropac



edenware®  
Packaging as nature intended...

# Categories of **PRODUCTS**

---

<b>Infinity Boxes</b>	<b>5</b>
<b>Cardboard Burger Boxes</b>	<b>8</b>
<b>Baggase Food Trays &amp; Boxes</b>	<b>10</b>
<b>Sauce Cups</b>	<b>13</b>
<b>Microwavable Containers</b>	<b>15</b>
<b>Newleaf</b>	<b>17</b>
<b>Bol</b>	<b>19</b>
<b>Deli Pots</b>	<b>21</b>
<b>Wooden Cutlery &amp; Skewers</b>	<b>23</b>
<b>Lids</b>	<b>25</b>
<b>Ripple Cups</b>	<b>27</b>

# Categories of **PRODUCTS**

---

**Single & Double  
Wall Cups** 30

**Go-Deli® Food  
Trays** 33

**Takeaway Food  
Containers & Pails** 36

**Paper Straws** 38

**PET Smoothie  
Cups & Lids** 40

**Go-RPET® Smotthie  
Cups & Lids** 42

**Takeaway Carrier  
& Grab Bags** 45

**Paper Counter  
Bags** 48

**Greaseproof  
Paper Bags** 51

**Pizza Boxes** 53





# INFINITY BOXES

Water Resistant



As a plastic, this packaging is naturally waterproof

Microwaveable



Allows food in the pack to be reheated while maintaining food safety and protection.

Fully Recyclable



This product can be easily recycled

# Infinity<sup>TM</sup>

# Metropac



Large Meal Box/ Infinity TT10



Medium Meal Box/ Infinity HP2



Large Burger Box/HP6



Small Burger Box/ Infinity HP1



Meal Box Infinity HP4/1



Meal Box Infinity HP4/2



Meal Box Infinity HP4/3

Description	Dimensions*	Colour	Quantity
Large Meal Box/ Infinity TT10	241 x 308 x 39	Kraft	220
Medium Meal Box/ Infinity HP2	185 x 145 x 62	Kraft	220
Large Burger Box/HP6	150 x 150 x 75	Kraft	220
Small Burger Box/ Infinity HP1	128 x 120 x 74	Kraft	220
Meal Box Infinity HP4/1	414 x 240 x 39	Kraft	150
Meal Box Infinity HP4/2	414 x 240 x 39	Kraft	150
Meal Box Infinity HP4/3	414 x 240 x 39	Kraft	150

\*length x width x depth in mm



Fully recyclable



Keeps food hotter for longer



Lightweight and durable



Made in the UK



Microwaveable



Water-resistant



Acids, alkalis and hot oil resistant



Low carbon footprint



**Large Meal Box/ Infinity TT10**



**Medium Meal Box/ Infinity HP2**



**Large Burger Box/HP6**



**Small Burger Box/ Infinity HP1**



**Meal Box Infinity HP4/1**



**Meal Box Infinity HP4/2**



**Meal Box Infinity HP4/3**

Description	Dimensions*	Colour	Quantity
Large Meal Box/ Infinity TT10	241 x 308 x 39	White	220
Medium Meal Box/ Infinity HP2	185 x 145 x 62	White	220
Large Burger Box/HP6	150 x 150 x 75	White	220
Small Burger Box/ Infinity HP1	128 x 120 x 74	White	220
Meal Box Infinity HP4/1	414 x 240 x 39	White	150
Meal Box Infinity HP4/2	414 x 240 x 39	White	150
Meal Box Infinity HP4/3	414 x 240 x 39	White	150

\*length x width x depth in mm



Fully recyclable



Keeps food hotter for longer



Lightweight and durable



Made in the UK



Microwaveable



Water-resistant



Acids, alkalis and hot oil resistant



Low carbon footprint



# **CARDBOARD BURGER BOXES**

**Introducing our eco-friendly cardboard burger boxes – the perfect blend of functionality and sustainability! Crafted from durable, responsibly sourced materials, these boxes not only keep your delicious burgers fresh and hot, but also make a positive impact on the environment. With a sleek design that highlights your delectable creations, our burger boxes are a testament to your commitment to quality and the planet. Join us in embracing a greener tomorrow, one tasty burger at a time!**





**Small Burger Box**

**Large Burger Box**

Description	Dimensions*	Quantity
Small Burger Box	140 x 130 x 80	100
Large Burger Box	250 x 150 x 80	100

\*length x width x depth in mm



# BAGASSE FOOD TRAYS & BOXES

## Design

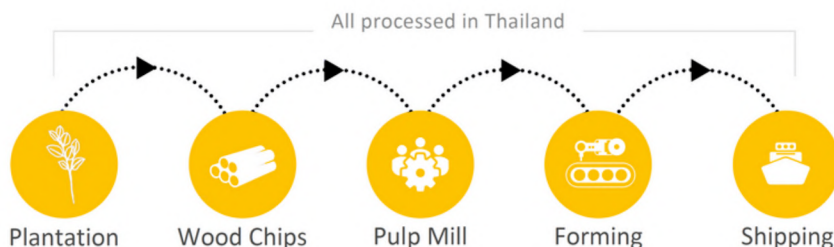


Bagasse food trays and boxes stand out with their aesthetically pleasing design. They enhance the visual appeal of food presentation and leave a professional impression on customers.

## Microwave and Freezer Safe



Bagasse food trays and boxes are suitable for heating in the microwave or storing food in the freezer. These products are heat-resistant and allow you to easily heat or freeze your meals.





**6" Burger Box**



**7"x5" Clamshell Regular**



**9"x6" Clamshell Large**



**9"x6" Clamshell Large  
(2 Compartment)**



**8"x8" Lunch Box Square**



**9"x9" Lunch Box Square**



**9"x9" Lunch Box Square  
(3 Compartment)**



**Medium Chip Tray**

Description	Dimensions*	Colour	Quantity
6" Burger Box	185 x 145 x 62	White	4 x 125
7"x5" Clamshell Regular	188 x 136 x 48	White	4 x 125
9"x6" Clamshell Large	230 x 155 x 48	White	2 x 125
9"x6" Clamshell Large (2 Compartment)	251 x 166 x 47/63	White	2 x 125
8"x8" Lunch Box Square	220 x 202 x 48	White	4 x 50
9"x9" Lunch Box Square	230 x 230 x 50	White	2 x 125
9"x9" Lunch Box Square (3 Compartment)	230 x 230 x 50	White	4 x 50
Medium Chip Tray	180 x 135 x 30	White	4 x 125

\*length x width x depth in mm





**7" Round Bagasse Plate**



**9" Round Bagasse Plate**



**10" Round Bagasse Plate**



**7" x 10" Oval Bagasse Plate**



**15cm x 15cm Square Bagasse Plate**



**12oz Bagasse Bowl**



**16oz Bagasse Bowl**

Description	Dimensions*	Colour	Quantity
7" Round Bagasse Plate	178	White	4 x 125
9" Round Bagasse Plate	225	White	4 x 125
10" Round Bagasse Plate	260	White	4 x 125
7" x 10" Oval Bagasse Plate	255 x 190	White	4 x 125
15cm x 15cm Square Bagasse Plate	160	White	4 x 125
12oz Bagasse Bowl	160	White	4 x 125
16oz Bagasse Bowl	178	White	4 x 125

\*length x width x depth in mm

**Product Features**

- Compostable (EN13432)
- Light-weight and stackable
- Strong, sturdy and leak proof
- PFAS free
- FSC certified source
- Microwavable
- BPI Cert (pending)
- Heat resistant - keeps food hot/cold for longer





# SAUCE CUPS

Introducing our Hinged Sauce Cups - the perfect companion for mess-free dining! With a clever hinged design and secure closure, these versatile cups keep your sauces and condiments fresh and easily accessible.



**1oz Hinged Sauce Cups**



**2oz Hinged Sauce Cups**



**4oz Hinged Sauce Cups**



**6oz Sauce Cups**

Description	Dimensions*	Colour	Quantity
1oz Hinged Sauce Cups	10 x 100	Clear	1000
2oz Hinged Sauce Cups	10 x 100	Clear	1000
4oz Hinged Sauce Cups	5 x 100	Clear	1000
6oz Sauce Cups	5 x 100	Clear	1000

\*length x width x depth in mm



# MICROWAVABLE CONTAINERS

Discover the convenience of our Microwavable Plastic Containers - your go-to solution for convenient food storage and reheating. With BPA-free, microwave-safe materials, these containers make meal prep and cleanup a breeze.



**500cc Microwavable Containers**



**650cc Microwavable Containers**



**750cc Microwavable Containers**



**1000cc Microwavable Containers**

Description	Dimensions*	Colour	Quantity
500cc Microwavable Containers	4 x 50	Clear	250
650cc Microwavable Containers	4 x 50	Clear	250
750cc Microwavable Containers	4 x 50	Clear	250
1000cc Microwavable Containers	4 x 50	Clear	250

\*length x width x depth in mm





# NEWLEAF

**Newleaf® hinged containers have a practical, robust design and offer a cost-effective packaging solution for everything on the menu.**



**Newleaf / 150ml**



**Newleaf / 250ml**



**Newleaf / 375ml**



**Newleaf / 500ml**



**Newleaf / 600ml**



**Newleaf / 750ml**



**Newleaf / 1000ml**



**Newleaf / 1500ml**

Description	Dimensions*	Colour	Quantity
Newleaf / 150ml	150 x 130 x 23	Clear	600
Newleaf / 250ml	146 x 130 x 32	Clear	750 or 330
Newleaf / 375ml	146 x 130 x 45	Clear	330
Newleaf / 500ml	146 x 130 x 57	Clear	750 or 400
Newleaf / 600ml	150 x 130 x 56	Clear	600
Newleaf / 750ml	182 x 147 x 57	Clear	500
Newleaf / 1000ml	182 x 147 x 71	Clear	400
Newleaf / 1500ml	249 x 173 x 60	Clear	100

\*length x width x depth in mm



# **BOL**

**Enhance your sustainable, closed-loop credentials with stylish design that has 360 degrees of clarity for excellent product visibility.**



**BOL / 250ml**



**BOL / 375ml**



**BOL / 500ml**



**BOL / 750ml**



**BOL / 1000ml**

Description	Dimensions*	Colour	Quantity
BOL / 250ml	129 x 129 x 65	Clear	600
BOL / 375ml	134 x 134 x 70	Clear	300
BOL / 500ml	155 x 155 x 62	Clear	200
BOL / 750ml	155 x 155 x 79	Clear	300
BOL / 1000ml	186 x 186 x 81	Clear	200

\*length x width x depth in mm





# DELI POTS

Smooth-walled pot and lid provide excellent product presentation and are made with 100% recycled PET (rPET) and are fully recyclable, for consumer peace of mind.



**Metropac**



**Deli Pot 280ml**



**Deli Pot 400ml**



**Deli Pot Lid**

Description	Dimensions*	Colour	Quantity
Deli Pot 280ml	ø99 x 64	Clear	720
Deli Pot 400ml	ø99 x 99	Clear	720
Deli Pot Lid**	ø104 x 19	Clear	1440

\*Ø diameter x depth in mm

\*\*used with 80 x 25 x 5mm spork



# WOODEN CUTLERY & SKEWERS

**Our sustainably sourced wooden cutlery range offers the perfect solution for outdoors and events.**

- Full compliance with EU timber regulations


**Wooden Knife**

**Wooden Fork**

**Wooden Spoon**

**Wooden Teaspoon**

**Wooden Stirrer**

**Wooden Corn Skewer**

**Wooden Skewer**

**Wooden Cocktail Sticks (Box)**

**Wooden Ice Cream Spade**

Description	Dimensions*	Colour	Quantity
Wooden Knife	165	-	10 x 100
Wooden Fork	157	-	10 x 100
Wooden Spoon	157	-	10 x 100
Wooden Teaspoon	111	-	10 x 100
Wooden Stirrer	140 (5.5")	-	10 x 1000
Wooden Stirrer	179 (7")	-	10 x 1000
Wooden Stirrer	190 (7.5")	-	5 x 1000 or 10 x 1000
Wooden Corn Skewer	114 (4.5")	-	10 x 1000
Wooden Skewer	179 (7")	-	50 x 200
Wooden Skewer	229 (9")	-	50 x 200
Wooden Skewer	305 (12")	-	50 x 200
Wooden Cocktail Sticks (Box)	80	-	50 x 1000
Wooden Ice Cream Spade	95	-	10 x 400

\*length x width x depth in mm



# LIDS

Wide range of lid sizes for 4oz to 20oz cups. With two different color options.





**4oz Coffee Cup Lid**



**8oz Sip Through Coffee Cup Lid**



**10-20oz Sip Through Coffee Cup Lid**



**8oz Sip Through Coffee Cup Lid**



**10-20oz Sip Through Coffee Cup Lid**

Description	Dimensions*	Colour	Quantity
4oz Coffee Cup Lid	62	White	10 x 100
8oz Sip Through Coffee Cup Lid	80	White	10 x 100
10-20oz Sip Through Coffee Cup Lid	90	White	10 x 100
8oz Sip Through Coffee Cup Lid	80	Black	10 x 100
10-20oz Sip Through Coffee Cup Lid	90	Black	10 x 100

\*length x width x depth in mm



# RIPPLE CUPS

Available in a range of sizes from 4oz to 20oz. Our traditional ripple cups are produced using unbleached kraft paper board or can be printed using flexo print technology. The triple wall ripple cup provides the best heat insulation as the unique design includes a corrugated wrap which offers increased hand-comfort, heat insulation and brand presentation.

- Made from high quality food grade paper board
- Custom print up to six colours
- Batch coded for full traceability on all formed products
- Available in round ripple, vertical ripple and 'S'-ripple
- Available in different board weights



**4oz Coffee Cup**



**8oz Coffee Cup**



**12oz Squat Coffee Cup**



**12oz Coffee Cup**



**16oz Coffee Cup**



**20oz Coffee Cup**

Description	Dimensions*	Colour	Quantity
4oz Coffee Cup	62	Kraft	40 x 25
8oz Coffee Cup	80	Kraft	20 x 25
12oz Squat Coffee Cup	90	Kraft	20 x 25
12oz Coffee Cup	90	Kraft	20 x 25
16oz Coffee Cup	90	Kraft	20 x 25
20oz Coffee Cup	90	Kraft	20 x 25

\*length x width x depth in mm





8oz Coffee Cup



12oz Squat Coffee Cup



12oz Coffee Cup



16oz Coffee Cup



8oz Coffee Cup



12oz Squat Coffee Cup



12oz Coffee Cup



16oz Coffee Cup



20oz Coffee Cup

Description	Dimensions*	Colour	Quantity
8oz Coffee Cup	80	Black	20 x 25
12oz Squat Coffee Cup	90	Black	20 x 25
12oz Coffee Cup	90	Black	20 x 25
16oz Coffee Cup	90	Black	20 x 25
8oz Coffee Cup	90	White	20 x 25
12oz Squat Coffee Cup	80	White	20 x 25
12oz Coffee Cup	90	White	20 x 25
16oz Coffee Cup	90	White	20 x 25
20oz Coffee Cup	90	Black	20 x 25

\*length x width x depth in mm





# SINGLE & DOUBLE WALL CUPS

Our premium grade single wall plain white cups are available in a range of sizes from 4oz through to 16oz and are suited to the needs of many food service operators.

Available in a range of sizes from 8oz to 16oz, our Double Wall cups have a smooth matt finish and offer improved heat insulation.

In addition to our generic stock lines we also offer bespoke printing.

- Made from high quality food grade paper board
- Custom print up to six colours
- Each cup is batch coded for full traceability



**4oz Single Wall  
Coffee Cup**



**6oz Single Wall  
Coffee Cup**



**8oz Single Wall  
Coffee Cup**



**10oz Single Wall  
Coffee Cup**



**12oz Single Wall  
Coffee Cup**



**16oz Single Wall  
Coffee Cup**



**20oz Single Wall  
Coffee Cup**

Description	Dimensions*	Colour	Quantity
4oz Single Wall Coffee Cup	62	White	20 x 50
6oz Single Wall Coffee Cup	80	White	20 x 50
8oz Single Wall Coffee Cup	80	White	20 x 50
10oz Single Wall Coffee Cup	90	White	20 x 50
12oz Single Wall Coffee Cup	90	White	20 x 50
16oz Single Wall Coffee Cup	90	White	20 x 50
20oz Single Wall Coffee Cup	90	White	20 x 50

\*length x width x depth in mm



8oz Double Wall Coffee Cup



12oz Double Wall Coffee Cup



16oz Double Wall Coffee Cup



8oz Double Wall Coffee Cup



12oz Double Wall Coffee Cup



16oz Double Wall Coffee Cup



8oz Double Wall Coffee Cup



12oz Double Wall Coffee Cup



16oz Double Wall Coffee Cup

Description	Dimensions*	Colour	Quantity
8oz Double Wall Coffee Cup	80	Black	20 x 25
12oz Double Wall Coffee Cup	90	Black	20 x 25
16oz Double Wall Coffee Cup	90	Black	20 x 25
8oz Double Wall Coffee Cup	80	Kraft	20 x 50
12oz Double Wall Coffee Cup	90	Kraft	20 x 50
16oz Double Wall Coffee Cup	90	Kraft	20 x 25
8oz Double Wall Coffee Cup	80	White	20 x 25
12oz Double Wall Coffee Cup	90	White	20 x 25
16oz Double Wall Coffee Cup	90	White	20 x 25

\*length x width x depth in mm



# **GO-DELI<sup>®</sup>**

# **FOOD TRAYS**

The Go-Deli<sup>®</sup> Food Trays has been designed to offer a more premium packaging solution for fish, chips and pizza on the go.

- Made from virgin food grade kraft/white paper board
- Soya based ink without the plastic lining constitutes a more environmentally friendly option
- Custom print up to six colours
- Bespoke sizes are available, subject to minimum order quantity





**Burger Box**



**4" Burger Tray**



**5" Burger Tray**



**Chip Scoop Small**



**Chip Scoop Large**



**Chip Tray**



**Hot Dog Tray Open Ended**



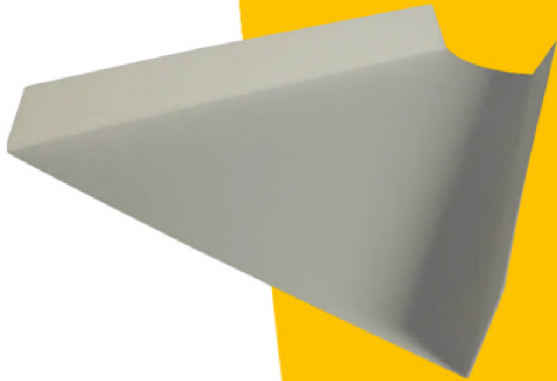
**Baguette Tray**



**Meal Tray Medium**

Description	Dimensions*	Colour	Quantity
Burger Box	130 x 130 x 65	Kraft	10 x 50
4" Burger Tray	135 x 130 x 55	Kraft	4 x 125
5" Burger Tray	165 x 155 x 40	Kraft	1 x 500
Chip Scoop Small	55 x 135 x 130	Kraft	2 x 250
Chip Scoop Large	55 x 135 x 155	Kraft	2 x 250
Chip Tray	150 x 125 x 40	Kraft	2 x 250
Hot Dog Tray Open Ended	240 x 70 x 40	Kraft	4 x 125
Baguette Tray	275 x 105 x 62	Kraft	2 x 250
Meal Tray Medium	240 x 175 x 55	Kraft	4 x 125

\*length x width x depth in mm



**Pizza Slice Tray**



**Open Tray Large**



**Closed Tray Large**

Description	Dimensions*	Colour	Quantity
Pizza Slice Tray	-	White	2 x 500
Open Tray Large	235 x 120 x 45	Full Colour	10 x 50
Closed Tray Large	250 x 125 x 55	Full Colour	10 x 25

\*length x width x depth in mm



# TAKEAWAY FOOD CONTAINERS & PAILS

Our Deli Boxes and Food Pails are ideal for the grab and go and take away markets. Our containers are capable of being recycled with a leak resistant design. All boxes have a fold over lid with a clip in closure and are available in different sizes and colours.

- Webbed design for leak resistance
- PE lined (Recyclable – where facilities exist)
- Available in different sizes and colours subject to minimum orders and lead time



**800ml Small Deli Box #1 Fold Top**



**1300ml Medium Deli Box #8 Fold Top**



**1400ml Large Deli Box #2 Fold Top**



**1800ml Extra Large Deli Box #3 Fold Top**



**16oz Heavy Duty Pail**



**26oz Heavy Duty Pail**



**32oz Heavy Duty Pail**

Description	Dimensions*	Colour	Quantity
800ml Small Deli Box #1 Fold Top	130 x 105 x 65	Kraft	9 x 50
1300ml Medium Deli Box #8 Fold Top	160 x 125 x 70	Kraft	6 x 50
1400ml Large Deli Box #2 Fold Top	215 x 155 x 45	Kraft	4 x 70
1800ml Extra Large Deli Box #3 Fold Top	215 x 155 x 65	Kraft	4 x 45
16oz Heavy Duty Pail	82 x 74 x 90	White	20 x 25
26oz Heavy Duty Pail	88 x 100 x 100	White	20 x 25
32oz Heavy Duty Pail	92 x 103 x 115	White	20 x 25

\*length x width x depth in mm

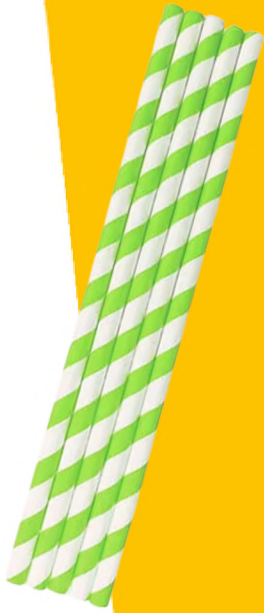




# PAPER STRAWS

Go-Pak's Edenware paper straw selection come in a variety of sizes and designs and are the ideal environmentally friendly solution for bars, restaurants, catering, parties and events. Edenware is packaging as nature intended.

- Made from virgin food-grade paper
- Recyclable and biodegradable



**Smoothie Lime Green & White Striped Paper Straw**



**Straight Black & White Striped Paper Straw**



**Straight Black Cocktail Stirrer Paper Straw**



**Individually Wrapped Paper Straw**

Description	Dimensions*	Colour	Quantity
Smoothie Lime Green & White Striped Paper Straw	200 x 8	Lime Green & White	20 x 250
Straight Black & White Striped Paper Straw	200 x 6	Black & White	20 x 250
Straight Black Cocktail Stirrer Paper Straw	145 x 5	Black	20 x 250
Individually Wrapped Paper Straw	200 x 8	White	20 x 250

\*length x width x depth in mm



# PET SMOOTHIE CUPS & LIDS

Our PET tumblers are both strong and crack resistant, perfect for providing your customers with a premium product. The high clarity and versatility of this range make it ideal for smoothies, sweets, savoury foods and fruit which can be accompanied with a dip or a condiment in one of our portion pots.

- Tapered, fully rolled rim provides extra strength and comfort for drinking and allows for tight lid fitment
- Bottom stack for easy cup separation and minimal stack height
- Made from PET so easily recyclable
- Durable and crack resistant
- Printing available subject to MOQ



**7oz PET Smoothie Cup**



**9oz PET Smoothie Cup**



**9oz PET Domed Lid With Hole**



**9oz PET Domed Lid No Hole**



**7oz PET Smoothie Lid Straw Slot**



**9oz PET Smoothie Lid Straw Slot**

Description	Dimensions*	Colour	Quantity
7oz PET Smoothie Cup	74	Clear	20 x 50
9oz PET Smoothie Cup	78	Clear	20 x 50
9oz PET Domed Lid With Hole	78	Clear	20 x 100
9oz PET Domed Lid No Hole	78	Clear	20 x 100
7oz PET Smoothie Lid Straw Slot	74	Clear	40 x 50
9oz PET Smoothie Lid Straw Slot	78	Clear	40 x 50

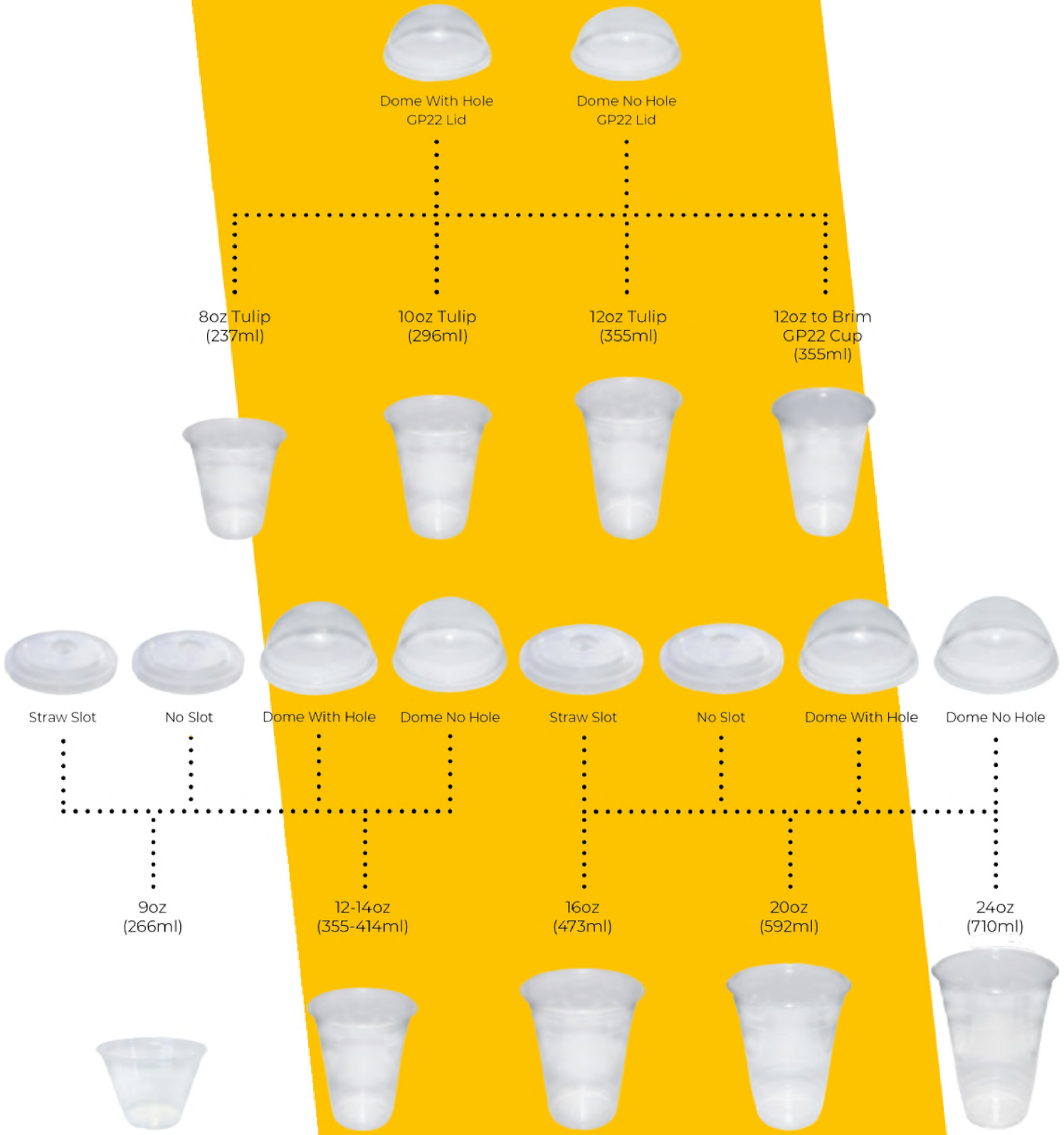
\*length x width x depth in mm





# GO-RPET<sup>®</sup> SMOOTHIE CUPS & LIDS

Our Go-rPET products are made with a minimum 30% recycled content, offer excellent clarity and are incredibly strong and shatterproof. This product can also be indefinitely recycled, whereby reducing plastic waste entering our environment and oceans.



Description	Dimensions*	Colour	Quantity
9oz Squat rPET Cup GP9R	93	Clear	1000
12oz rPET Cup	93	Clear	1000
16oz rPET Cup	98	Clear	1000
20oz rPET Cup	98	Clear	1000
24oz rPET Cup	98	Clear	1000
12oz rPET Flat Lid (Straw Slot)	93	Clear	1000
12oz rPET Flat Lid (No Hole)	93	Clear	1000
12oz rPET Domed Lid (With Hole)	93	Clear	1000
12oz rPET Domed Lid (No Hole)	93	Clear	1000
16oz rPET Flat Lid (Straw Slot)	98	Clear	1000
16oz rPET Flat Lid (No Hole)	98	Clear	1000
16/20/24oz rPET Domed Lid (With Hole)	98	Clear	1000
16oz rPET Domed Lid (No Hole)	98	Clear	1000
8oz Tulip rPET Cup	84	Clear	1000
10oz Tulip rPET Cup	84	Clear	1000
12oz Tulip rPET Cup	84	Clear	1000
12oz to Brim rPET Cup GP22	84	Clear	1000
12oz rPET Domed Lid (With Hole) GP22	84	Clear	1000
12oz rPET Domed Lid (No Hole) GP22	84	Clear	1000



# **TAKEAWAY CARRIER & GRAB BAGS**

**Our paper carrier bags with external flat paper handles are commonly used for cafes, take-away & catering outlets and other retail shops.**

**Our take away 'grab and go' kraft paper bags. Ideal for take away delis and fast food outlets.**

**Our foil lined bags are ideal for keeping food fresh and insulated.**





**Small Flat Handle Paper Bags**



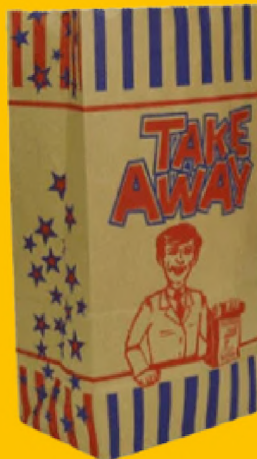
**Medium Flat Handle Paper Bags**



**Large Flat Handle Paper Bags**



**Extra Large Flat Handle Paper Bags**



**R4 Takeaway Grab Paper Bags**



**R8 Takeaway Grab Paper Bags**

Description	Dimensions*	Colour	Quantity
Small Flat Handle Paper Bags	178 x 267 x 229	Kraft	250
Medium Flat Handle Paper Bags	216 x 330 x 254	Kraft	250
Large Flat Handle Paper Bags	254 x 394 x 305	Kraft	250
Extra Large Flat Handle Paper Bags	320 x 220 x 24	Kraft	150
R4 Takeaway Grab Paper Bags	124 x 78 x 234	Kraft	250
R8 Takeaway Grab Paper Bags	149 x 100 x 310	Kraft	250

\*length x width x depth in mm



**Small Flat Handle Paper Bags**



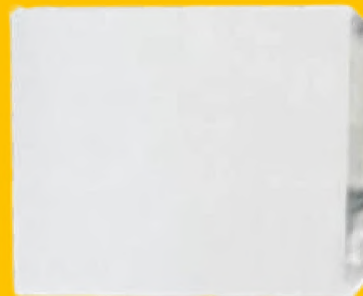
**Medium Flat Handle Paper Bags**



**Large Flat Handle Paper Bags**



**Extra Large Flat Handle Paper Bags**



**Foil Lined Paper Bags**

Description	Dimensions*	Colour	Quantity
Small Flat Handle Paper Bags	178 x 267 x 229	White	250
Medium Flat Handle Paper Bags	216 x 330 x 254	White	250
Large Flat Handle Paper Bags	254 x 394 x 305	White	250
Extra Large Flat Handle Paper Bags	320 x 220 x 24	White	200
Foil Lined Paper Bags	178 x 229 x 305	-	500

\*length x width x depth in mm



# PAPER COUNTER BAGS

Our brown and pure kraft paper bags used traditionally for fruit and veg, greengrocers and supermarkets. Strung in the corner allows the bag to be hung.

White sulphite paper bags are perfect for a variety of retail and grocery uses. Strung in the corner allows the bag to be hung.





**7 x 7 Brown Kraft Paper Bags**



**7 x 9 Brown Kraft Paper Bags**



**8.5 x 8.5 Brown Kraft Paper Bags**



**10 x 10 Brown Kraft Paper Bags**



**10 x 10 Pure Kraft Paper Bags**



**12 x 12 Brown Kraft Paper Bags**



**12 x 12 Pure Kraft Paper Bags**



**13 x 14 Brown Kraft Paper Bags**



**14 x 18 Brown Kraft Paper Bags**

Description	Dimensions*	Colour	Quantity
7 x 7 Brown Kraft Paper Bags	175 x 175	Kraft	1000
7 x 9 Brown Kraft Paper Bags	178 x 241	Kraft	1000
8.5 x 8.5 Brown Kraft Paper Bags	216 x 216	Kraft	1000
10 x 10 Brown Kraft Paper Bags	254 x 254	Kraft	1000
10 x 10 Pure Kraft Paper Bags	254 x 254	Kraft	1000
12 x 12 Brown Kraft Paper Bags	318 x 305	Kraft	500
12 x 12 Pure Kraft Paper Bags	318 x 305	Kraft	500
13 x 14 Brown Kraft Paper Bags	325 x 350	Kraft	500
14 x 18 Brown Kraft Paper Bags	355 x 450	Kraft	500

\*length x width x depth in mm





**5 x 5 White Sulphite Paper Bags**



**6 x 6 White Sulphite Paper Bags**



**7 x 7 White Sulphite Paper Bags**



**7 x 9 White Sulphite Paper Bags**



**8.5 x 8.5 White Sulphite Paper Bags**



**10 x 10 White Sulphite Paper Bags**



**12.5 x 12 White Sulphite Paper Bags**



**4 x 6 x 14 Baguette White Sulphite Paper Bags**

Description	Dimensions*	Colour	Quantity
5 x 5 White Sulphite Paper Bags	125 x 125	White	1000
6 x 6 White Sulphite Paper Bags	150 x 150	White	1000
7 x 7 White Sulphite Paper Bags	175 x 175	White	1000
7 x 9 White Sulphite Paper Bags	178 x 241	White	1000
8.5 x 8.5 White Sulphite Paper Bags	216 x 216	White	1000
10 x 10 White Sulphite Paper Bags	254 x 254	White	1000
12.5 x 12 White Sulphite Paper Bags	318 x 305	White	500
4 x 6 x 14 Baguette White Sulphite Paper Bags	101 x 152 x 355	White	1000

\*length x width x depth in mm



# **GREASEPROOF PAPER BAGS**

**Unbleached greaseproof paper bags contain grease resistant coating making them popular with takeaways, chip shops, cafes and bakeries.**



**6 x 6 Greaseproof Paper  
Bags**



**7 x 7 Greaseproof Paper  
Bags**



**8 x 8 Greaseproof Paper  
Bags**



**10 x 10 Greaseproof Paper  
Bags**

Description	Dimensions*	Colour	Quantity
6 x 6 Greaseproof Paper Bags	150 x 150	-	1000
7 x 7 Greaseproof Paper Bags	178 x 178	-	1000
8 x 8 Greaseproof Paper Bags	203 x 203	-	1000
10 x 10 Greaseproof Paper Bags	254 x 254	-	1000

\*length x width x depth in mm



# PIZZA BOXES

## Practical



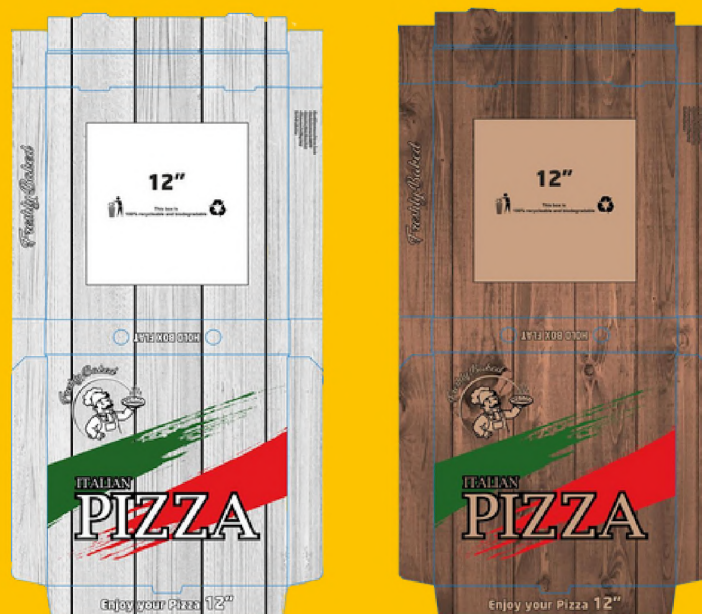
**These models are manufactured in various sizes according to the dimensions of the food to be placed inside, providing convenience in usage**

## Eco-Friendly



**This packaging type can easily be recycled after use and includes Pizza Box Models that do not harm the environment and human health when mixed with waste.**





## Pizza Box

Description	Colour	Quantity
6" Pizza Box	Full Colour / Brown	100
7" Pizza Box	Full Colour / Brown	100
8" Pizza Box	Full Colour / Brown	100
9" Pizza Box	Full Colour / Brown	100
10" Pizza Box	Full Colour / Brown	100
11" Pizza Box	Full Colour / Brown	100
12" Pizza Box	Full Colour / Brown	100
13" Pizza Box	Full Colour / Brown	50
14" Pizza Box	Full Colour / Brown	50
15" Pizza Box	Full Colour / Brown	50
16" Pizza Box	Full Colour / Brown	50

# Make your own design!



*We prepare your pizza boxes  
with the design you want*





## CONTACT US

<https://metropac.co.uk>

020 3005 3209

[info@metropac.co.uk](mailto:info@metropac.co.uk)

Rayley Lane North Weald CM16 6AR Epping ESSEX

